

Palmyra 237

B. Grove-
PIKE

Hans Supplee

Abraham Shaler Junr

D. 27-172

Large Rock

John C. Westbrook.

Rachel Shaler.

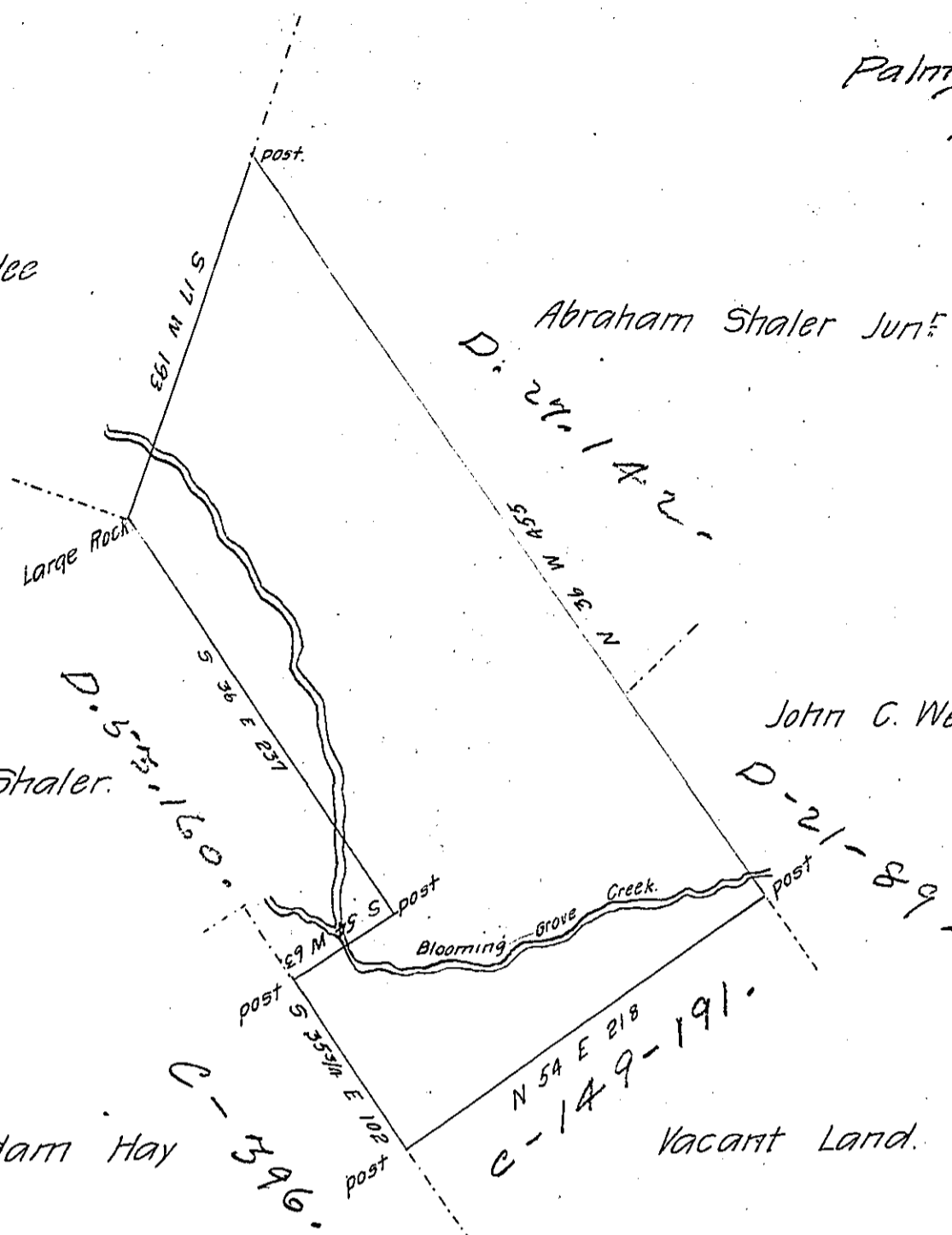
D-21-89

D. 5-160

C-149-191

Adam Hay

Vacant Land.



By Virtue of an application dated the 14th day of October 1768 Surveyed the 27th day of July 1845 to Elizabeth Shaler (for William Nyce) the above described Tract of land Situate in Palmyra Township (formerly Northampton) now Pike County adjoining Abraham Shaler Junr Containing three hundred & Ninety nine acres and thirty one perches and allowance of Six pr Ct. for roads &c.

pr John T Cross. D. S.

To John Laporte Esq
 Surveyor General of Penna

IN TESTIMONY that the above is a copy of the original remaining on file in the Department of Internal Affairs of Pennsylvania, made conformably to an Act of Assembly approved the 16th day of February, 1833, I have hereunto set my Hand and caused the Seal of said Department to be affixed at Harrisburg, this twenty-first day of February 1906.

Isaac S. Brown
 Secretary of Internal Affairs.